



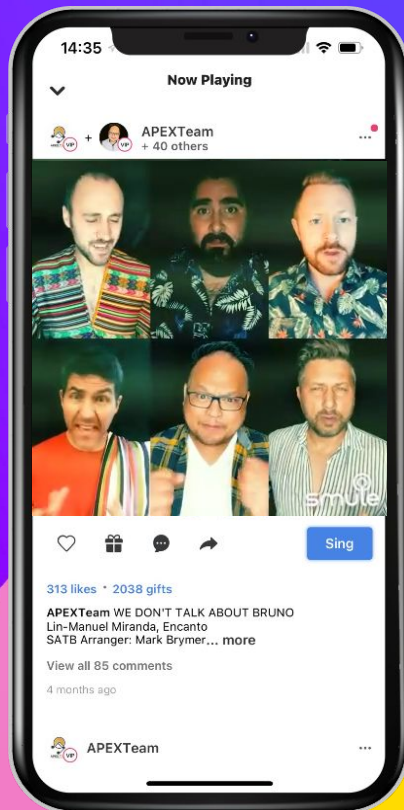
**WE CONNECT
THE WORLD
THROUGH
MUSIC**



What is Smule?

→ **THE MOST
DOWNLOADED SINGING APP
OF ALL TIME**

→ **A POSITIVE SOCIAL
PLATFORM THAT ALLOWS
PEOPLE TO MEANINGFULLY
ENGAGE THROUGH MUSIC.**



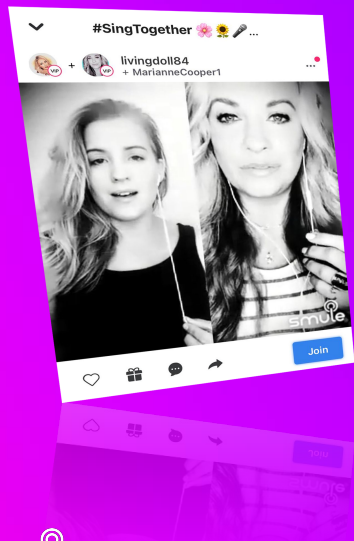
→ **A VIBRANT
COMMUNITY
WHERE EVERYONE
IS EMPOWERED TO
BE A CREATOR.**

→ **A GLOBAL
COMMUNITY OF
CREATORS**

Engaged Community

→ Since 2018

→ Current



→ GEO

2.5B
recordings

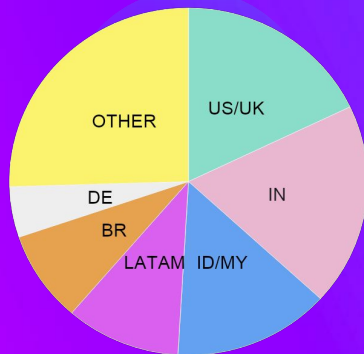
35B
listens

10M
songs in catalogue

25M
new recordings
per month

450M
listens
per month

120K
new songs
per month



The MIR Team

→ 5 engineers

spread over Sofia (BG) and San Francisco

→ 2 senior researchers:

Perry Cook

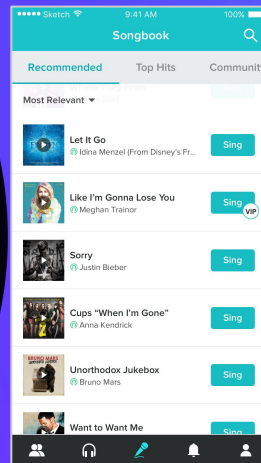
George Tzanetakis



AUDIO VIDEO TEAM

ML TEAM

MIR TEAM



MIR Problems

→ On Backing tracks

Problem	Application
Audio fingerprinting	Song duplicate detection
Structure segmentation	Enables short performances
Genre detection	Genre-based recommendation
Beats, drums and chords detection	Enhances audio and video effects

→ On Vocal performances

Problem	Application
Pitch tracking	Reference melody visualization
Singing activity detection	Video transitions in duet performances
Singing quality detection	Surface good content for marketing

Contacts



[@Smule](#)



[@Smule](#)



[@Smule](#)



[Smule Inc.](#)